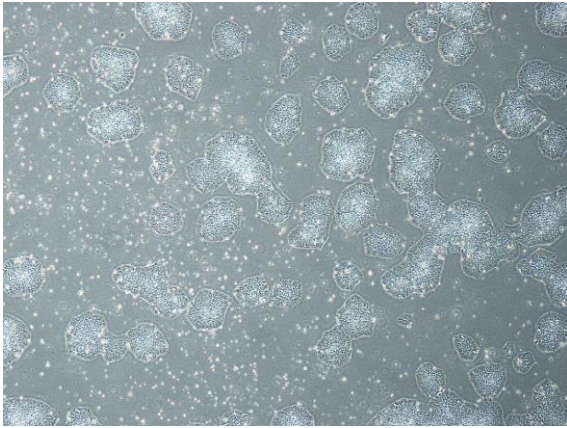
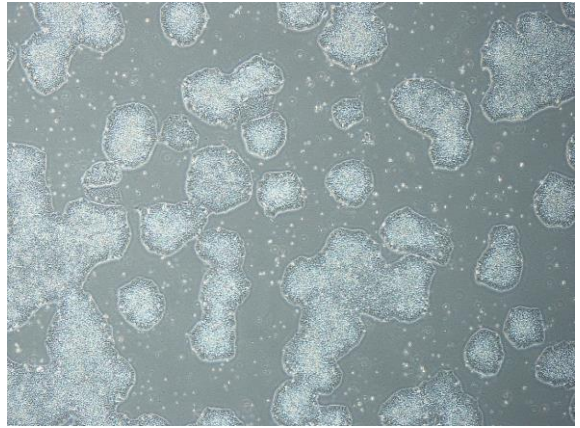


【 CiRA-j-1395 】 Morphology of iPSC colonies

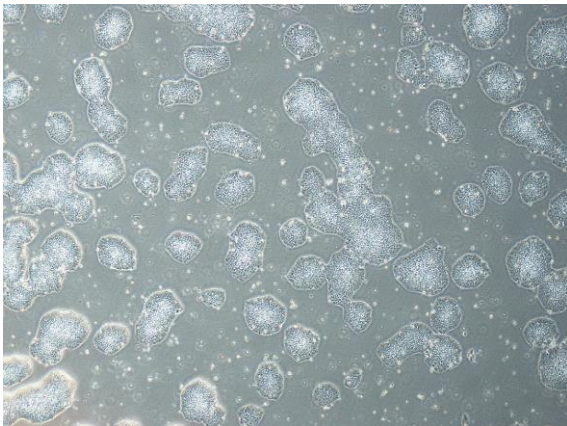
CiRA-j-1395-A: passage-3



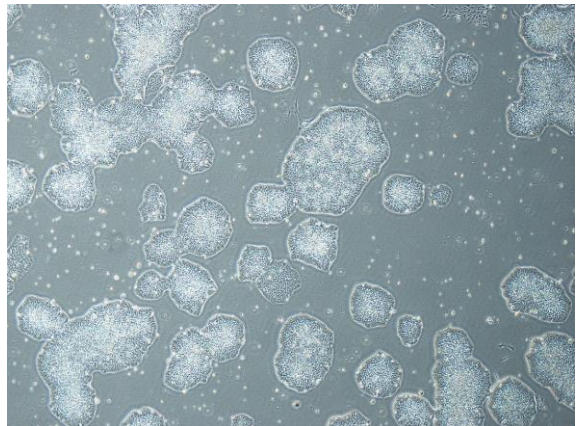
CiRA-j-1395-B: passage-3



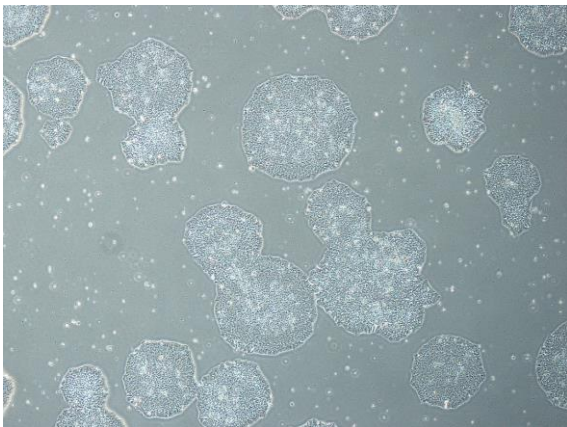
CiRA-j-1395-C: passage-3



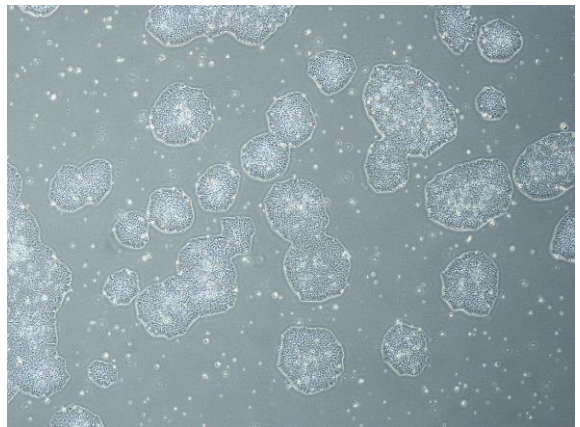
CiRA-j-1395-D: passage-3



CiRA-j-1395-E: passage-4



CiRA-j-1395-F: passage-3



(All images were captured at 4x magnification)